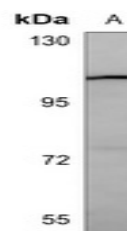


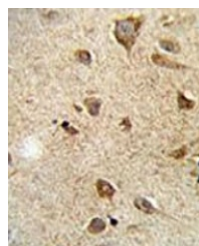
## Product Datasheet

### RET antibody (orb1474050)

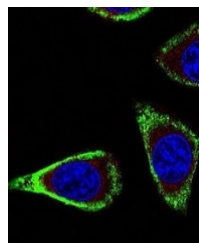
<b>Description</b>	Mouse monoclonal antibody to RET
<b>Species/Host</b>	Mouse
<b>Reactivity</b>	Human
<b>Conjugation</b>	Unconjugated
<b>Tested Applications</b>	IF, IH, WB
<b>Immunogen</b>	Recombinant fusion protein of human RET. The exact sequence is proprietary.
<b>Target</b>	RET
<b>Preservatives</b>	Mouse IgM kappa. Supplied in crude ascites with 0.01% sodium azide.
<b>Form/Appearance</b>	Mouse IgM kappa. Supplied in crude ascites with 0.01% sodium azide.
<b>Storage</b>	Shipped at 4°C. Upon delivery aliquot and store at -20°C for one year. Avoid freeze/thaw cycles.
<b>Note</b>	For research use only
<b>Clonality</b>	Monoclonal
<b>Source</b>	Mouse
<b>Uniprot ID</b>	<a href="#">P07949</a>
<b>Entrez</b>	<a href="#">5979</a>
<b>Dilution Range</b>	WB (1/500 - 1/5000), IH (1/50 - 1/200), IF/IC (1/10 - 1/50)
<b>Expiration Date</b>	12 months from date of receipt.



Western blot analysis of RET expression ...



Immunohistochemical analysis of RET stai...



Immunofluorescent analysis of RET staini...