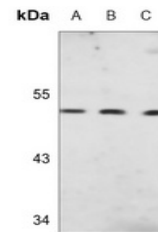


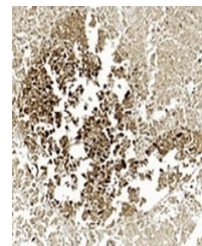
Product Datasheet

Gamma-enolase antibody (orb1474030)

Description	Mouse monoclonal antibody to Gamma-enolase
Species/Host	Mouse
Reactivity	Human
Conjugation	Unconjugated
Tested Applications	IH, WB
Immunogen	Recombinant fusion protein of human Gamma-enolase. The exact sequence is proprietary.
Target	ENO2
Preservatives	Mouse IgG2b kappa. Liquid in PBS, pH 7.3, 30% glycerol, and 0.01% sodium azide.
Form/Appearance	Mouse IgG2b kappa. Liquid in PBS, pH 7.3, 30% glycerol, and 0.01% sodium azide.
Storage	Maintain refrigerated at 2-8°C for up to 2 weeks. For long term storage store at -20°C in small aliquots to prevent freeze-thaw cycles.
Note	For research use only
Clonality	Monoclonal
Source	Mouse
Uniprot ID	P09104
Entrez	2026
Dilution Range	WB (1/500 - 1/1000), IH (1/100 - 1/500)
Expiration Date	12 months from date of receipt.



Western blot analysis of Gamma-enolase e...



Immunohistochemical analysis of Gamma-en...