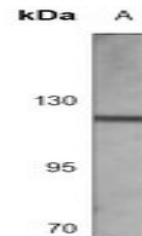


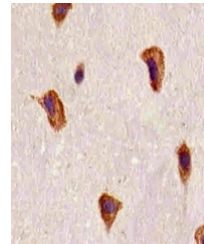
## Product Datasheet

### FGFR1 antibody (orb1474017)

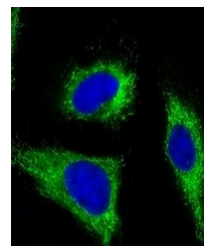
<b>Description</b>	Mouse monoclonal antibody to FGFR1
<b>Species/Host</b>	Mouse
<b>Reactivity</b>	Human
<b>Conjugation</b>	Unconjugated
<b>Tested Applications</b>	IF, IH, WB
<b>Immunogen</b>	KLH-conjugated synthetic peptide encompassing a sequence within the C-term region of human FGFR1. The exact sequence is proprietary.
<b>Target</b>	FGFR1
<b>Preservatives</b>	Mouse IgG1 kappa. Liquid in PBS, pH 7.3, 30% glycerol, and 0.01% sodium azide.
<b>Form/Appearance</b>	Mouse IgG1 kappa. Liquid in PBS, pH 7.3, 30% glycerol, and 0.01% sodium azide.
<b>Storage</b>	Maintain refrigerated at 2-8°C for up to 2 weeks. For long term storage store at -20°C in small aliquots to prevent freeze-thaw cycles.
<b>Note</b>	For research use only
<b>Clonality</b>	Monoclonal
<b>Source</b>	Mouse
<b>Uniprot ID</b>	<a href="#">P11362</a>
<b>Entrez</b>	<a href="#">2260</a>
<b>Dilution Range</b>	WB (1/500 - 1/1000), IH (1/50 - 1/200), IF/IC (1/10 - 1/50)
<b>Expiration Date</b>	12 months from date of receipt.



Western blot analysis of FGFR1 expressio...



Immunohistochemical analysis of FGFR1 st...



Immunofluorescent analysis of FGFR1 stai...