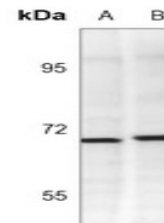


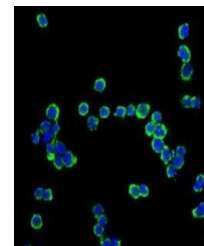
Product Datasheet

CD138 antibody (orb1473966)

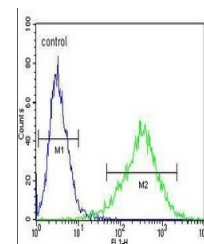
Description	Mouse monoclonal antibody to CD138
Species/Host	Mouse
Reactivity	Human
Conjugation	Unconjugated
Tested Applications	FC, IF, WB
Immunogen	KLH-conjugated synthetic peptide of human CD138. The exact sequence is proprietary.
Target	SDC1
Preservatives	Mouse IgG1. Liquid in PBS, pH 7.3, 30% glycerol, and 0.01% sodium azide.
Form/Appearance	Mouse IgG1. Liquid in PBS, pH 7.3, 30% glycerol, and 0.01% sodium azide.
Storage	Maintain refrigerated at 2-8°C for up to 2 weeks. For long term storage store at -20°C in small aliquots to prevent freeze-thaw cycles.
Note	For research use only
Clonality	Monoclonal
Source	Mouse
Uniprot ID	P18827
Entrez	6382
Dilution Range	WB (1/500 - 1/1000)
Expiration Date	12 months from date of receipt.



Western blot analysis of CD138 expression...



Immunofluorescent analysis of CD138 staining...



Flow cytometric analysis of HepG2 cells ...