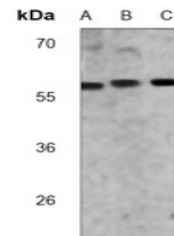


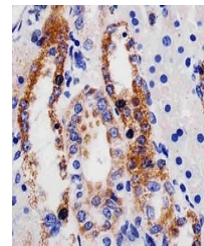
Product Datasheet

ME2 antibody (orb1473945)

Description	Mouse monoclonal antibody to ME2
Species/Host	Mouse
Reactivity	Human, Mouse
Conjugation	Unconjugated
Tested Applications	IH, WB
Immunogen	KLH-conjugated synthetic peptide encompassing a sequence within the C-term region of human ME2. The exact sequence is proprietary.
Target	ME2
Preservatives	Mouse IgG1 kappa. Liquid in PBS, pH 7.3, 30% glycerol, and 0.01% sodium azide.
Form/Appearance	Mouse IgG1 kappa. Liquid in PBS, pH 7.3, 30% glycerol, and 0.01% sodium azide.
Storage	Maintain refrigerated at 2-8°C for up to 2 weeks. For long term storage store at -20°C in small aliquots to prevent freeze-thaw cycles.
Note	For research use only
Clonality	Monoclonal
Source	Mouse
Uniprot ID	P23368 , Q99KE1
Entrez	107029 , 4200
Dilution Range	WB (1/1000 - 1/2000), IH (1/50 - 1/200)
Expiration Date	12 months from date of receipt.



Western blot analysis of ME2 expression ...



Immunohistochemical analysis of ME2 stai...