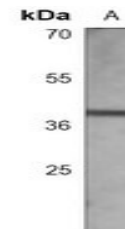


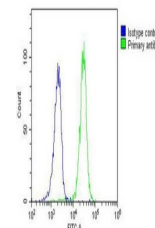
Product Datasheet

RASSF2 antibody (orb1473875)

Description	Mouse monoclonal antibody to RASSF2
Species/Host	Mouse
Reactivity	Human
Conjugation	Unconjugated
Tested Applications	FC, WB
Immunogen	Recombinant fusion protein of human RASSF2. The exact sequence is proprietary.
Target	RASSF2
Preservatives	Mouse IgG2a kappa. Liquid in PBS, pH 7.3, 30% glycerol, and 0.01% sodium azide.
Form/Appearance	Mouse IgG2a kappa. Liquid in PBS, pH 7.3, 30% glycerol, and 0.01% sodium azide.
Storage	Maintain refrigerated at 2-8°C for up to 2 weeks. For long term storage store at -20°C in small aliquots to prevent freeze-thaw cycles.
Note	For research use only
Clonality	Monoclonal
Source	Mouse
Uniprot ID	P50749
Entrez	9770
Dilution Range	WB (1/500 - 1/1000), FC (1/10 - 1/50)
Expiration Date	12 months from date of receipt.



Western blot analysis of RASSF2 expressi...



Flow cytometric analysis of Raji cells u...