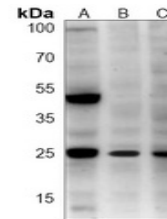


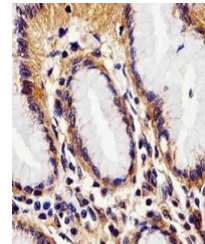
Product Datasheet

Rac 1 antibody (orb1473829)

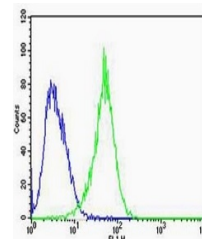
Description	Mouse monoclonal antibody to Rac 1
Species/Host	Mouse
Reactivity	Human, Rat
Conjugation	Unconjugated
Tested Applications	FC, IH, WB
Immunogen	KLH-conjugated synthetic peptide of human Rac 1. The exact sequence is proprietary.
Target	RAC1
Preservatives	Mouse IgG2b. Liquid in PBS, pH 7.3, 30% glycerol, and 0.01% sodium azide.
Form/Appearance	Mouse IgG2b. Liquid in PBS, pH 7.3, 30% glycerol, and 0.01% sodium azide.
Storage	Maintain refrigerated at 2-8°C for up to 2 weeks. For long term storage store at -20°C in small aliquots to prevent freeze-thaw cycles.
Note	For research use only
Clonality	Monoclonal
Source	Mouse
Uniprot ID	Q6RUV5, P63000
Entrez	363875, 5879
Dilution Range	WB (1/500 - 1/1000), IH (1/50 - 1/200), FC (1/10 - 1/50)
Expiration Date	12 months from date of receipt.



Western blot analysis of Rac 1 expressio...



Immunohistochemical analysis of Rac 1 st...



Flow cytometric analysis of U87MG cells ...