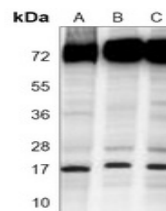


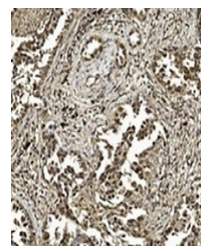
## Product Datasheet

### SUMO1 antibody (orb1473827)

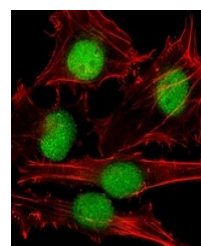
|                            |  |
|----------------------------|--|
| <b>Description</b>         | Mouse monoclonal antibody to SUMO1   |
| <b>Species/Host</b>        | Mouse  |
| <b>Reactivity</b>          | Human  |
| <b>Conjugation</b>         | Unconjugated   |
| <b>Tested Applications</b> | FC, IF, IH, WB   |
| <b>Immunogen</b>           | Recombinant fusion protein of human SUMO1. The exact sequence is proprietary.                    |
| <b>Target</b>              | SUMO1  |
| <b>Preservatives</b>       | Mouse IgG1. Liquid in PBS, pH 7.3, 30% glycerol, and 0.01% sodium azide.                         |
| <b>Form/Appearance</b>     | Mouse IgG1. Liquid in PBS, pH 7.3, 30% glycerol, and 0.01% sodium azide.                         |
| <b>Storage</b>             | Shipped at 4°C. Upon delivery aliquot and store at -20°C for one year. Avoid freeze/thaw cycles. |
| <b>Note</b>                | For research use only  |
| <b>Clonality</b>           | Monoclonal   |
| <b>Source</b>              | Mouse  |
| <b>Uniprot ID</b>          | <a href="#">P63165</a>   |
| <b>Entrez</b>              | <a href="#">7341</a>   |
| <b>Dilution Range</b>      | WB (1/500 - 1/2000), IH (1/50 - 1/200), IF/IC (1/10 - 1/50), FC (1/10 - 1/50)                    |
| <b>Expiration Date</b>     | 12 months from date of receipt.  |



Western blot analysis of SUMO1 expressio...



Immunohistochemical analysis of SUMO1 st...



Immunofluorescent analysis of SUMO1 stai...