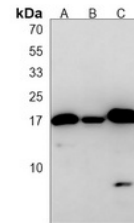


Product Datasheet

LC3A/B antibody (orb1473675)

Description	Mouse monoclonal antibody to LC3A/B
Species/Host	Mouse
Reactivity	Human, Mouse, Rat
Conjugation	Unconjugated
Tested Applications	WB
Immunogen	Recombinant fusion protein of human LC3A/B. The exact sequence is proprietary.
Target	MAP1LC3A; MAP1LC3B
Preservatives	Mouse IgG1 kappa. Liquid in PBS, pH 7.3, 30% glycerol, and 0.01% sodium azide.
Form/Appearance	Mouse IgG1 kappa. Liquid in PBS, pH 7.3, 30% glycerol, and 0.01% sodium azide.
Storage	Maintain refrigerated at 2-8°C for up to 2 weeks. For long term storage store at -20°C in small aliquots to prevent freeze-thaw cycles.
Note	For research use only
Clonality	Monoclonal
Source	Mouse
Uniprot ID	Q9CQV6 , Q9GZQ8 , Q6XVN8 , Q62625 , Q9H492 , Q91VR7
Entrez	362245 , 64862 , 84557 , 81631 , 66734 , 67443
Dilution Range	WB (1/500 - 1/4000)
Expiration Date	12 months from date of receipt.



Western blot analysis of LC3A/B expressi...