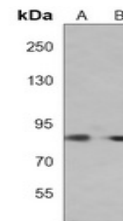


## Product Datasheet

### Smurf2 antibody (orb1473667)

<b>Description</b>	Mouse monoclonal antibody to Smurf2
<b>Species/Host</b>	Mouse
<b>Reactivity</b>	Human
<b>Conjugation</b>	Unconjugated
<b>Tested Applications</b>	WB
<b>Immunogen</b>	Recombinant fusion protein of human Smurf2. The exact sequence is proprietary.
<b>Target</b>	SMURF2
<b>Preservatives</b>	Mouse IgG1 kappa. Liquid in PBS, pH 7.3, 30% glycerol, and 0.01% sodium azide.
<b>Form/Appearance</b>	Mouse IgG1 kappa. Liquid in PBS, pH 7.3, 30% glycerol, and 0.01% sodium azide.
<b>Storage</b>	Shipped at 4°C. Upon delivery aliquot and store at -20°C for one year. Avoid freeze/thaw cycles.
<b>Note</b>	For research use only
<b>Clonality</b>	Monoclonal
<b>Source</b>	Mouse
<b>Uniprot ID</b>	<a href="#">Q9HAU4</a>
<b>Entrez</b>	<a href="#">64750</a>
<b>Dilution Range</b>	WB (1/1000 - 1/2000)
<b>Expiration Date</b>	12 months from date of receipt.



Western blot analysis of Smurf2 expression...