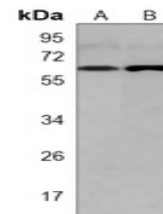


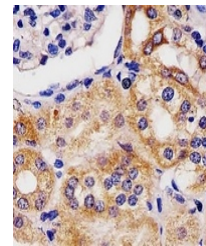
Product Datasheet

GLS2 antibody (orb1473639)

Description	Mouse monoclonal antibody to GLS2
Species/Host	Mouse
Reactivity	Human, Mouse
Conjugation	Unconjugated
Tested Applications	IH, WB
Immunogen	Recombinant fusion protein of human GLS2. The exact sequence is proprietary.
Target	GLS2
Preservatives	Mouse IgG1 kappa. Liquid in PBS, pH 7.3, 30% glycerol, and 0.01% sodium azide.
Form/Appearance	Mouse IgG1 kappa. Liquid in PBS, pH 7.3, 30% glycerol, and 0.01% sodium azide.
Storage	Maintain refrigerated at 2-8°C for up to 2 weeks. For long term storage store at -20°C in small aliquots to prevent freeze-thaw cycles.
Note	For research use only
Clonality	Monoclonal
Source	Mouse
Uniprot ID	Q9UI32 , Q571F8
Entrez	216456 , 27165
Dilution Range	WB (1/500 - 1/1000), IH (1/50 - 1/200)
Expiration Date	12 months from date of receipt.



Western blot analysis of GLS2 expression...



Immunohistochemical analysis of GLS2 sta...