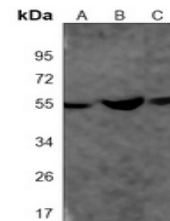


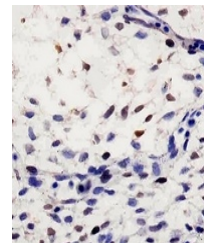
Product Datasheet

SUFU antibody (orb1473630)

Description	Mouse monoclonal antibody to SUFU
Species/Host	Mouse
Reactivity	Human, Mouse, Primate
Conjugation	Unconjugated
Tested Applications	IH, WB
Immunogen	Recombinant fusion protein of human SUFU. The exact sequence is proprietary.
Target	SUFU
Preservatives	Mouse IgG1 kappa. Liquid in PBS, pH 7.3, 30% glycerol, and 0.01% sodium azide.
Form/Appearance	Mouse IgG1 kappa. Liquid in PBS, pH 7.3, 30% glycerol, and 0.01% sodium azide.
Storage	Maintain refrigerated at 2-8°C for up to 2 weeks. For long term storage store at -20°C in small aliquots to prevent freeze-thaw cycles.
Note	For research use only
Clonality	Monoclonal
Source	Mouse
Uniprot ID	Q9UMX1 , Q9Z0P7
Entrez	51684 , 24069
Dilution Range	WB (1/500 - 1/1000), IH (1/50 - 1/200)
Expiration Date	12 months from date of receipt.



Western blot analysis of SUFU expression...



Immunohistochemical analysis of SUFU sta...