

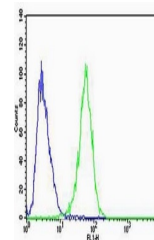
## Product Datasheet

### CAPN6 antibody (orb1473613)

<b>Description</b>	Mouse monoclonal antibody to CAPN6
<b>Species/Host</b>	Mouse
<b>Reactivity</b>	Mouse
<b>Conjugation</b>	Unconjugated
<b>Tested Applications</b>	WB
<b>Immunogen</b>	Recombinant fusion protein of human CAPN6. The exact sequence is proprietary.
<b>Target</b>	CAPN6
<b>Preservatives</b>	Mouse IgG1. Liquid in PBS, pH 7.3, 30% glycerol, and 0.01% sodium azide.
<b>Form/Appearance</b>	Mouse IgG1. Liquid in PBS, pH 7.3, 30% glycerol, and 0.01% sodium azide.
<b>Storage</b>	Maintain refrigerated at 2-8°C for up to 2 weeks. For long term storage store at -20°C in small aliquots to prevent freeze-thaw cycles.
<b>Note</b>	For research use only
<b>Clonality</b>	Monoclonal
<b>Source</b>	Mouse
<b>Uniprot ID</b>	<a href="#">O35646</a>
<b>Entrez</b>	<a href="#">12338</a>
<b>Dilution Range</b>	WB (1/500 - 1/1000), FC (1/10 - 1/50)
<b>Expiration Date</b>	12 months from date of receipt.



Western blot analysis of CAPN6 expression...



Flow cytometric analysis of A549 cells u...