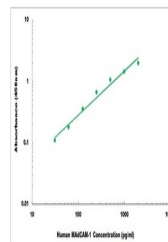


Product Datasheet

Human MAdCAM-1 ELISA Kit (orb1473443)

Description	Human MAdCAM-1 ELISA Kit
Reactivity	Human
Range	31.2 pg/ml - 2000 pg/ml
Tested Applications	ELISA
Target	MADCAM1
Storage	Shipped and store at 4°C for 6 months, store at -20°C for one year. Avoid freeze/thaw cycles.
Note	For research use only
Application notes	Detection Method: Colorimetric, Sample Types: Cell Culture Supernates, Serum, Plasma
Sample Types	Cell Culture Supernates, Serum, Plasma
Uniprot ID	Q13477
Sensitivity	15 pg/ml
Entrez	8174
Expiration Date	Please enquire.



Representative Standard Curve