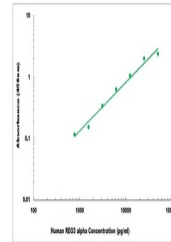


Product Datasheet

Human REG3 alpha ELISA Kit (orb1473423)

Description	Human REG3 alpha ELISA Kit
Reactivity	Human
Range	780 pg/ml - 50000 pg/ml
Tested Applications	ELISA
Target	REG3A
Storage	Shipped and store at 4°C for 6 months, store at -20°C for one year. Avoid freeze/thaw cycles.
Note	For research use only
Application notes	Detection Method: Colorimetric, Sample Types: Cell Culture Supernates, Serum, Plasma
Sample Types	Cell Culture Supernates, Serum, Plasma
Uniprot ID	Q06141
Sensitivity	400 pg/ml
Entrez	5068
Expiration Date	Please enquire.



Representative Standard Curve