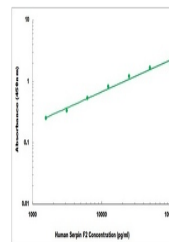


Product Datasheet

Human Serpin F2 ELISA Kit (orb1473414)

Description	Human Serpin F2 ELISA Kit
Reactivity	Human
Range	1560 pg/ml - 100000 pg/ml
Tested Applications	ELISA
Target	SERPINF2
Storage	Shipped and store at 4°C for 6 months, store at -20°C for one year. Avoid freeze/thaw cycles.
Note	For research use only
Application notes	Detection Method: Colorimetric, Sample Types: Cell Culture Supernates, Serum, Plasma
Sample Types	Cell Culture Supernates, Serum, Plasma
Uniprot ID	P08697
Sensitivity	800 pg/ml
Entrez	5345
Expiration Date	Please enquire.



Representative Standard Curve