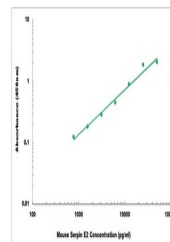


## Product Datasheet

### Mouse Serpin E2 ELISA Kit (orb1473343)

<b>Description</b>	Mouse Serpin E2 ELISA Kit
<b>Reactivity</b>	Mouse
<b>Range</b>	312 pg/ml - 20000 pg/ml
<b>Tested Applications</b>	ELISA
<b>Target</b>	SERPINE2
<b>Storage</b>	Shipped and store at 4°C for 6 months, store at -20°C for one year. Avoid freeze/thaw cycles.
<b>Note</b>	For research use only
<b>Application notes</b>	Detection Method: Colorimetric, Sample Types: Cell Culture Supernates, Serum, Plasma
<b>Sample Types</b>	Cell Culture Supernates, Serum, Plasma
<b>Uniprot ID</b>	<a href="#">Q07235</a>
<b>Sensitivity</b>	150 pg/ml
<b>Entrez</b>	<a href="#">20720</a>
<b>Expiration Date</b>	Please enquire.



Representative Standard Curve