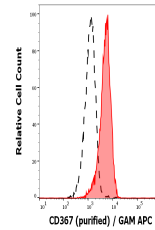


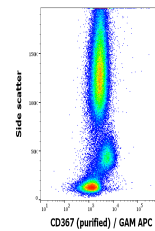
Product Datasheet

CD367 Antibody (orb1467379)

Description	CD367 is an approximately 20-28 kDa C-type lectin with immunoreceptor tyrosine-based inhibitory moti...
Reactivity	Human, Primate
Conjugation	Unconjugated
Tested Applications	ELISA, FC, ICC
Immunogen	CD367 ectodomain fused with human Fc
Target	CD367
Preservatives	Phosphate buffered saline (PBS), pH 7.4, 15 mM sodium azide
Concentration	1 mg/ml
Storage	Store at 2-8°C. Do not freeze.
Note	For research use only
Application notes	Flow cytometry: Recommended dilution: 1-4 µg/ml
Isotype	Mouse IgG1 kappa
Clonality	Monoclonal
Purity	Purified by protein-A affinity chromatography.
Uniprot ID	Q9UMR7
Hazard Information	Non-Toxic
Entrez	50856
Dilution Range	Flow cytometry: Recommended dilution: 1-4 µg/ml
Expiration Date	12 months from date of receipt.



Separation of human monocytes (red-fille...



Flow cytometry surface staining pattern ...