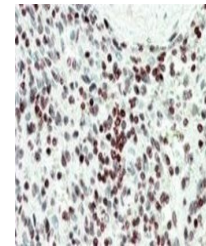


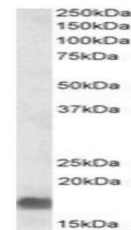
Product Datasheet

EDF1 antibody (orb146476)

Description	Goat polyclonal to EDF1
Species/Host	Goat
Reactivity	Human, Mouse, Porcine, Rat
Conjugation	Unconjugated
Tested Applications	ELISA, IHC, WB
Target	EDF1
Preservatives	Supplied at 0.5 mg/ml in Tris saline, 0.02% sodium azide, pH 7.3 with 0.5% bovine serum albumin. Aliquot and store at -20°C. Minimize freezing and thawing.
Storage	Aliquot and store at -20°C. Minimize freezing and thawing.
Note	For research use only
Application notes	Approx 17kDa band observed in lysates of cell line A549 (calculated MW of 16.4kDa according to NP_003783.1). Recommended concentration: 0.3-1 µg/ml. Experiment Notes: This antibody is expected to recognize both reported isoforms (NP_003783.1; NP_694880.1).
Protein Sequence	NKQHSITKNTAKLDR
Clonality	Polyclonal
MW	16.4; 15.5
Entrez	8721
Dilution Range	ELISA: 1:128000, WB: 0.3-1 µg/ml, IHC-P: 5-10µg/ml
Expiration Date	12 months from date of receipt.



Immunohistochemical staining of Human Sp...



Western blot analysis of A549 lysate usi...