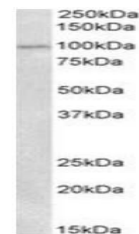


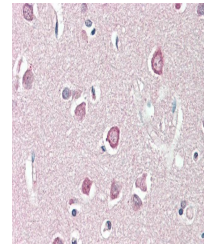
Product Datasheet

Autotaxin antibody (orb146472)

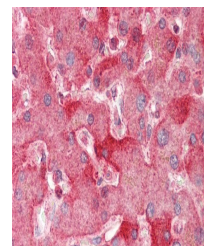
Description	Goat polyclonal antibody to Autotaxin
Species/Host	Goat
Reactivity	Human
Conjugation	Unconjugated
Tested Applications	ELISA, IHC, WB
Target	ENPP2 / AUTOTAXIN (aa698-712)
Preservatives	Supplied at 0.5 mg/ml in Tris saline, 0.02% sodium azide, pH 7.3 with 0.5% bovine serum albumin. Aliquot and store at -20°C. Minimize freezing and thawing.
Storage	Aliquot and store at -20°C. Minimize freezing and thawing.
Note	For research use only
Application notes	Approx 100kDa band observed in Human Placenta lysates (calculated MW of 105kDa according to NP_006200.3). Recommended concentration: 0.3-1 µg/ml. Experiment Notes: This antibody is expected to recognize iall reported isoforms (NP_006200.3; NP_001035181.1, NP_001124335.1).
Protein Sequence	PDHLTSCVRPDVRVS
Clonality	Polyclonal
MW	105; 99.0; 102
Entrez	5168
Dilution Range	ELISA: 1:128000, WB: 0.3-1 µg/ml, IHC-P: 5 µg/ml
Expiration Date	12 months from date of receipt.



Western blot analysis of Human Placenta ...



Immunohistochemical staining of Human Co...



Immunohistochemical staining of Human Li...