

Product Datasheet

Goat IgG Fab Rhodamine Antibody (orb1463593)

| | |
|----------------------------|--|
| Description | Goat IgG Fab Rhodamine Antibody |
| Conjugation | TRITC |
| Tested Applications | SDS-PAGE |
| Preservatives | 0.01% (w/v) Sodium Azide |
| Form/Appearance | Lyophilized |
| Concentration | 1.0 mg/mL |
| Storage | Store vial at 4° C prior to restoration. For extended storage aliquot contents and freeze at -20° C or below. Avoid cycles of freezing and thawing. Centrifuge product if not completely clear after standing at room temperature. This product is stable for several weeks at 4° C as an undiluted liquid. Dilute only prior to immediate use. |
| Note | For research use only |
| Application notes | Goat IgG F(ab) fragment Rhodamine conjugated has been tested by SDS-PAGE and is designed for immunofluorescence microscopy, fluorescence based plate assays (FLISA) and fluorescent western blotting. This product is also suitable for multiplex analysis, including multicolor imaging, utilizing various commercial platforms. |
| Isotype | IgG Fab |
| Purity | This product was prepared from normal serum by delipidation, salt fractionation, ion exchange chromatography followed by papain digestion and extensive dialysis against the buffer stated above. Assay by immunoelectrophoresis resulted in a single precipitin arc against anti-Goat IgG, anti-Goat IgG F(ab') ₂ and anti-Goat Serum. No reaction was observed against anti-Goat IgG F(c) or anti-Papain. |
| Source | Goat |

Biorbyt Ltd.

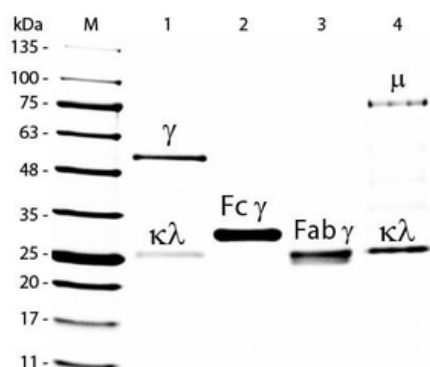
7 Signet Court, Swann's Road,
Cambridge, CB5 8LA, United Kingdom
Email: info@biorbyt.com, support@biorbyt.com
Phone: [+44 \(0\) 1223 859-353](tel:+44(0)1223859353) | Fax: [+1 \(415\) 651-8558](tel:+1(415)6518558)

Biorbyt LLC.

68 TW Alexander Drive,
Durham, NC, 27713, United States
Email: info@biorbyt.com, support@biorbyt.com
Phone: [+1 \(415\) 906-5211](tel:+1(415)9065211) | Fax: [+1 \(415\) 651-8558](tel:+1(415)6518558)

Expiration Date

12 months from date of receipt.



SDS-PAGE of Goat IgG Whole Molecule Rhodamine Conjugated (p/n orb346100). Lane M: 5 μ l Opal Prestained Marker. Lane 1: Reduced Goat IgG Whole Molecule Rhodamine Conjugated (p/n orb346100). Lane 2: Reduced Goat IgG F(c) Fragment (p/n orb2652765). Lane 3: Reduced Goat IgG F(ab) Fragment (p/n orb2652763). Lane 4: Reduced Goat IgM Whole Molecule (p/n orb346110). Load: 1 μ g for IgG, F(c) and F(ab); 3 μ g for IgM. Predicted/Observed size: IgG at 50 and 25 kDa; F(c) at 25 kDa; F(ab) at 25 kDa; IgM at 70 and 23 kDa. Observed F(c) Fragment migrates slightly higher.

Biorbyt Ltd.

7 Signet Court, Swann's Road,
Cambridge, CB5 8LA, United Kingdom
Email: info@biorbyt.com, support@biorbyt.com
Phone: [+44 \(0\) 1223 859-353](tel:+44(0)1223859353) | Fax: [+1 \(415\) 651-8558](tel:+1(415)6518558)

Biorbyt LLC.

68 TW Alexander Drive,
Durham, NC, 27713, United States
Email: info@biorbyt.com, support@biorbyt.com
Phone: [+1 \(415\) 906-5211](tel:+1(415)9065211) | Fax: [+1 \(415\) 651-8558](tel:+1(415)6518558)