
Product Datasheet

Rabbit IgG F(c) Rhodamine Antibody (orb1463582)

Description

Rabbit IgG F(c) Rhodamine Antibody

Conjugation

TRITC

Tested

IF

Applications
Preservatives

0.01% (w/v) Sodium Azide

Form/Appearance

Lyophilized

Concentration

1.0 mg/mL

Storage

Store vial at 4° C prior to restoration. For extended storage aliquot contents and freeze at -20° C or below. Avoid cycles of freezing and thawing. Centrifuge product if not completely clear after standing at room temperature. This product is stable for several weeks at 4° C as an undiluted liquid. Dilute only prior to immediate use.

Note

For research use only

Application notes

Rabbit IgG F(c) fragment Rhodamine conjugated is designed for immunofluorescence microscopy, fluorescence based plate assays (FLISA) and fluorescent western blotting. This product is also suitable for multiplex analysis, including multicolor imaging, utilizing various commercial platforms.

Isotype

IgG F(c)

Purity

This product was prepared from normal serum by delipidation, salt fractionation, ion exchange chromatography followed by papain digestion and extensive dialysis against the buffer stated above. Assay by immunoelectrophoresis resulted in a single precipitin arc against anti-Rabbit IgG, anti-Rabbit IgG F(c) and anti-Rabbit Serum. No reaction was observed against anti-Rabbit IgG F(ab')₂ or anti-Papain.

Source

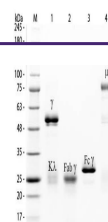
Rabbit

Dilution Range

IF: 1:500 - 1:2,500

Expiration Date

12 months from date of receipt.



SDS-PAGE of Rabbit IgG Whole Molecule Rh...