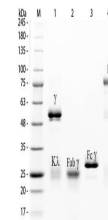


Product Datasheet

Rabbit IgG F(ab')₂ Rhodamine Antibody (orb1463581)

Description	Rabbit IgG F(ab') ₂ Rhodamine Antibody
Conjugation	TRITC
Preservatives	0.01% (w/v) Sodium Azide
Form/Appearance	Lyophilized
Concentration	1.0 mg/mL
Storage	Store vial at 4° C prior to restoration. For extended storage aliquot contents and freeze at -20° C or below. Avoid cycles of freezing and thawing. Centrifuge product if not completely clear after standing at room temperature. This product is stable for several weeks at 4° C as an undiluted liquid. Dilute only prior to immediate use.
Note	For research use only
Application notes	Rabbit IgG F(ab') ₂ fragment Rhodamine is designed for immunofluorescence microscopy, fluorescence based plate assays (FLISA) and fluorescent western blotting. This product is also suitable for multiplex analysis, including multicolor imaging, utilizing various commercial platforms.
Isotype	IgG F(ab') ₂
Purity	This product was prepared from normal serum by delipidation, salt fractionation, ion exchange chromatography followed by pepsin digestion and extensive dialysis against the buffer stated above. Assay by immunoelectrophoresis resulted in a single precipitin arc against anti-Rabbit IgG, anti-Rabbit IgG F(ab') ₂ and anti-Rabbit Serum. No reaction was observed against anti-Rabbit IgG F(c) or anti-Pepsin.
Source	Rabbit
Expiration Date	12 months from date of receipt.



SDS-PAGE of Rabbit IgG Whole Molecule Rh...