

---

## Product Datasheet

### Monkey IgG gamma antibody (HRP) (orb1463546)

**Description**

Monkey IgG gamma antibody (HRP)

**Species/Host**

Goat

**Reactivity**

Monkey

**Conjugation**

HRP

**Tested**

ELISA, IHC, WB

**Applications**
**Immunogen**

Anti-Monkey IgG (gamma chain) was produced by repeated immunization with monkey IgG gamma heavy chain in goat.

**Preservatives**

0.01% (w/v) Gentamicin Sulfate. Do NOT add Sodium Azide!

**Form/Appearance**

Lyophilized

**Concentration**

1.0 mg/mL

**Storage**

Store vial at 4° C prior to restoration. For extended storage aliquot contents and freeze at -20° C or below. Avoid cycles of freezing and thawing. Centrifuge product if not completely clear after standing at room temperature. This product is stable for several weeks at 4° C as an undiluted liquid. Dilute only prior to immediate use.

**Note**

For research use only

**Application notes**

Anti-Monkey IgG (gamma chain) peroxidase conjugated antibody has been tested by ELISA and western blot and is suitable for immunoblotting (western or dot blot), ELISA, immunoperoxidase electron microscopy and immunohistochemistry as well as other peroxidase-antibody based enzymatic assays requiring lot-to-lot consistency.

**Isotype**

IgG

**Clonality**

Polyclonal

**Purity**

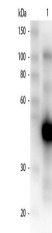
MONKEY IgG gamma Antibody Peroxidase Conjugated was prepared from monospecific antiserum by immunoaffinity chromatography using Monkey IgG coupled to agarose beads followed by solid phase adsorption(s) to remove any unwanted reactivities. Assay by immunoelectrophoresis resulted in a single precipitin arc against anti-Peroxidase, anti-Goat Serum, Monkey IgG and Monkey Serum.

**Dilution Range**

ELISA: 1:1,000 - 1:85,000, IHC: 1:500 - 1:2,500, WB: 1:1,000 - 1:5,000

Product	GoatAntiMonkey IgG	GoatAntiGoat IgG	GoatAntiHuman IgG
Human Serum	+	+	+
Monkey Serum	+	+	+
Conjugated Serum	+	+	+
Human IgG	+	+	+
Human IgM	+	+	+
Human IgA	+	+	+

This table displays additional reactivit...



Western Blot of Peroxidase conjugated Go...