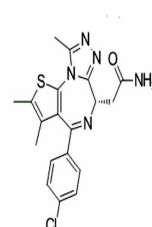


## Product Datasheet

### CPI203 (CPI-203) (orb146235)

<b>Description</b>	CPI203 is a novel potent, selective and cell permeable inhibitor of the bromodomain and extra termin...
<b>Note</b>	For research use only
<b>Formula</b>	C <sub>19</sub> H <sub>18</sub> CLN <sub>5</sub> OS
<b>MW</b>	399.8971
<b>CAS Number</b>	[1446144-04-2]
<b>SMILES</b>	<chem>C1C([H])=C([H])C(=C([H])C=1[H])C1C2C(C([H])([H])[H])=C(C([H])([H])[H])SC=2N2C(C([H])([H])[H])=NN=C2[C@]([H])(C([H])([H])C(N([H])[H])=O)N=1</chem>
<b>Expiration Date</b>	12 months from date of receipt.



Chemical structure of CPI203 (CPI-203)