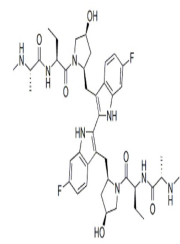


Product Datasheet

Birinapant (TL32711) (orb146223)

Description	Birinapant (TL32711) is a SMAC mimetic antagonist, mostly to clAP1 with Kd of < 1 nM, less potent to...
Note	For research use only
Formula	C ₄₂ H ₅₆ F ₂ N ₈ O ₆
MW	806.9409
CAS Number	[1260251-31-7]
SMILES	FC1C([H])=C([H])C2=C(C=1[H])N([H])C(C1=C(C3C([H])=C([H])C(=C([H])C=3N1[H])F)C([H])([H])[C@]1([H])C([H])([H])[C@@]([H])(C([H])([H])N1C([C@]([H])(C([H])([H])C([H])([H])[H])N([H])C([C@]([H])(C([H])([H])([H])N([H])C([H])([H])=O)=O)O[H])=C2C([H])([H])[C@]1([
Hazard Information	Non-Toxic
Expiration Date	12 months from date of receipt.



Chemical structure of Birinapant (TL3271...