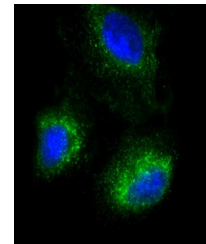


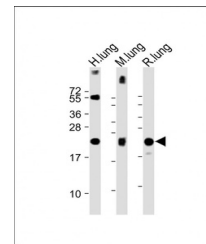
Product Datasheet

SFTPC antibody (orb1438554)

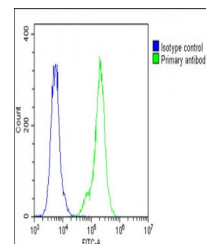
Description	Rabbit polyclonal antibody to SFTPC.
Species/Host	Rabbit
Reactivity	Human, Mouse, Rat
Conjugation	Unconjugated
Tested Applications	FC, IF, WB
Immunogen	Synthetic Peptide
Target	SFTPC
Form/Appearance	Purified polyclonal antibody supplied in PBS with 0.09% (W/V) sodium azide. This antibody is purified through a protein A column, followed by peptide affinity purification.
Storage	Maintain refrigerated at 2-8°C for up to 2 weeks. For long term storage store at -20°C in small aliquots to prevent freeze-thaw cycles
Note	For research use only
Isotype	Rabbit IgG
Clonality	Polyclonal
MW	21053
Uniprot ID	P11686
NCBI	NP_003009.2 , NP_001165881.1 , NP_001165828.1
Dilution Range	IF: 1:25, WB: 1:2000, FC: 1:25, IHC-P: 1:200
Expiration Date	12 months from date of receipt.



Immunofluorescent analysis of A549 cells...



Western blot: All lanes: Anti-SFTPC Antibo...



Flow cytometric analysis of A549 cells s...