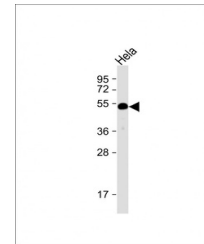


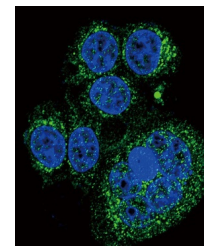
Product Datasheet

HtrA1 antibody (orb1437626)

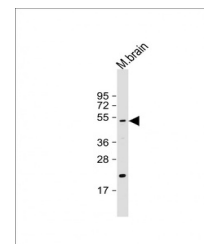
Description	Rabbit polyclonal antibody to HtrA1.
Species/Host	Rabbit
Reactivity	Human, Mouse
Conjugation	Unconjugated
Tested Applications	IF, IHC-P, WB
Immunogen	Synthetic Peptide
Target	HTRA1
Form/Appearance	Purified polyclonal antibody supplied in PBS with 0.09% (W/V) sodium azide. This antibody is prepared by Saturated Ammonium Sulfate (SAS) precipitation followed by dialysis against PBS.
Storage	Maintain refrigerated at 2-8°C for up to 2 weeks. For long term storage store at -20°C in small aliquots to prevent freeze-thaw cycles
Note	For research use only
Isotype	Rabbit IgG
Clonality	Polyclonal
MW	51287
Uniprot ID	Q92743
NCBI	NP_002766.1
Dilution Range	WB: 1:1000, IF: 1:10~50, WB: 1:2000, IHC-P: 1:10~50
Expiration Date	12 months from date of receipt.



Western blot:Anti-HtrA1 Antibody (N-term...



Confocal immunofluorescent analysis of H...



Western blot:Anti-HtrA1 Antibody (N-term...