
Product Datasheet

Galanin antibody (orb14374)

Description

Galanin antibody

Species/Host

Rabbit

Reactivity

Rat

Conjugation

Unconjugated

Tested Applications

IHC-P

Immunogen

KLH conjugated synthetic peptide derived from human Galanin. Please contact us for the exact immunogen sequence. The peptide is available as orb393964.

Target

Galanin

Form/Appearance

10 mM PBS, 0.02% sodium azide

Concentration

- 100 µg (in 200 µl): 0.5 mg/ml- 200 µg (in 400 µl): 0.5 mg/ml

Storage

Store at 4°C for up to two weeks. For long term storage, aliquot and store at -20°C, avoid freeze/thaw cycles.

Note

For research use only

Isotype

IgG

Clonality

Polyclonal

Purity

Polyclonal antibodies are purified by peptide affinity chromatography

MW

25 kDa

Uniprot ID

P10683

NCBI

015973, 057057

Entrez

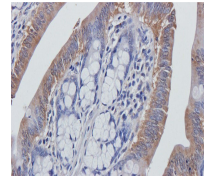
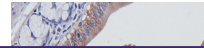
51083

Dilution Range

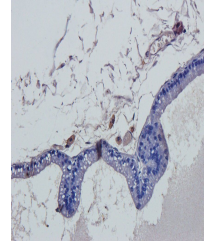
IHC-P: 1:100-500

Expiration Date

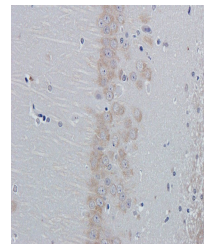
12 months from date of receipt.



Immunohistochemical staining of rat colo...



IHC-P image of rat prostate tissue using...



IHC-P staining of rat brain tissue using...