
Product Datasheet

Rab28 antibody (orb14373)

Description

Rab28 antibody

Species/Host

Rabbit

Reactivity

Human, Mouse, Rat

Conjugation

Unconjugated

Tested Applications

ICC, IF, IHC-P, WB

Immunogen

KLH conjugated synthetic peptide derived from human Rab28. Please contact us for the exact immunogen sequence. The peptide is available as orb393963.

Target

Rab28

Form/Appearance

10 mM PBS, 0.02% sodium azide

Concentration

- 100 µg (in 200 µl): 0.5 mg/ml- 200 µg (in 400 µl): 0.5 mg/ml

Storage

Maintain refrigerated at 2-8°C for up to 2 weeks. For long term storage store at -20°C in small aliquots to prevent freeze-thaw cycles.

Note

For research use only

Isotype

IgG

Clonality

Polyclonal

Purity

Polyclonal antibodies are purified by peptide affinity chromatography

MW

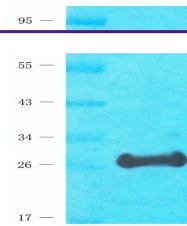
25 kDa

Uniprot ID
[P51158](#), [Q99KL7](#), [P51157](#)
NCBI
[001017979](#)
Entrez
[9364](#)
Dilution Range

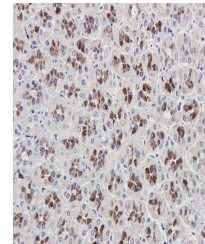
IF/ICC: 1:100-500, IHC-P: 1:100-500, WB: 1:200-2000

Expiration Date

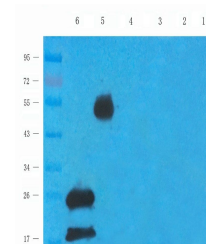
12 months from date of receipt.



Western blot analysis of mouse retina ti...



Immunohistochemical staining of rat stom...



Western blot analysis of rat spinal cord...