

Product Datasheet

Myoglobin antibody (orb14371)

Description

Myoglobin antibody

Species/Host

Rabbit

Reactivity

Mouse, Porcine, Rat

Conjugation

Unconjugated

Tested Applications

ICC, IF, IHC-P, WB

Immunogen

KLH conjugated synthetic peptide derived from human Myoglobin. Please contact us for the exact immunogen sequence. The peptide is available as orb393961.

Target

Myoglobin

Form/Appearance

10 mM PBS, 0.02% sodium azide

Concentration

- 100 µg (in 200 µl): 0.5 mg/ml- 200 µg (in 400 µl): 0.5 mg/ml

Storage

Store at 4°C for up to two weeks. For long term storage, aliquot and store at -20°C, avoid freeze/thaw cycles.

Note

For research use only

Isotype

IgG

Clonality

Polyclonal

Purity

Polyclonal antibodies are purified by peptide affinity chromatography

MW

17 kDa

Uniprot ID

[Q9QZ76](#), [P04247](#)

NCBI

[005359](#), [005368](#)

Entrez

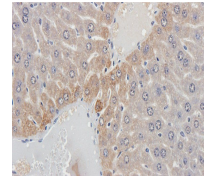
[4151](#)

Dilution Range

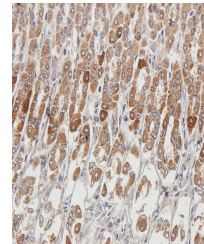
IF/ICC: 1:100-600, IHC-P: 1:100-800, WB: 1:100-600

Expiration Date

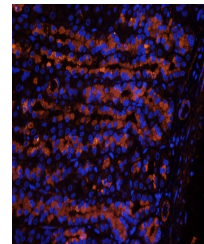
12 months from date of receipt.



Immunohistochemical staining of mouse li...



Immunohistochemical staining of paraffin...



IF image of rat stomach tissue using Myo...