
Product Datasheet

GLUT3 antibody (orb14368)

Description

GLUT3 antibody

Species/Host

Rabbit

Reactivity

Human, Rat

Conjugation

Unconjugated

Tested Applications

ICC, IF, IHC-P

Immunogen

KLH conjugated synthetic peptide derived from human GLUT3. Please contact us for the exact immunogen sequence. The peptide is available as orb393958.

Target

GLUT3

Form/Appearance

10 mM PBS, 0.02% sodium azide

Concentration

- 100 µg (in 200 µl): 0.5 mg/ml- 200 µg (in 400 µl): 0.5 mg/ml

Storage

Store at 4°C for up to two weeks. For long term storage, aliquot and store at -20°C, avoid freeze/thaw cycles.

Note

For research use only

Isotype

IgG

Clonality

Polyclonal

Purity

Polyclonal antibodies are purified by peptide affinity chromatography

MW

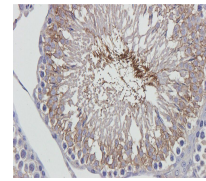
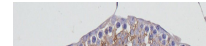
20 kDa

Uniprot ID
[P11169](#), [Q07647](#)
NCBI
[006931](#), [008862](#)
Entrez
[6515](#)
Dilution Range

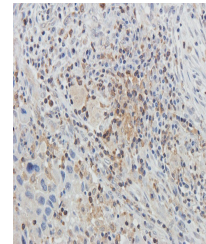
IF/ICC: 1:100-600, IHC-P: 1:100-600

Expiration Date

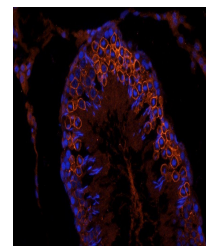
12 months from date of receipt.



IHC-P staining of rat testis tissue usin...



IHC-P staining of human lung cancer tiss...



Immunofluorescence image of rat testis t...