
Product Datasheet

Adrenomedullin antibody (orb14367)

Description

Adrenomedullin antibody

Species/Host

Rabbit

Reactivity

Mouse, Rat

Conjugation

Unconjugated

Tested Applications

ICC, IF, IHC-P

Immunogen

KLH conjugated synthetic peptide derived from human Adrenomedullin. Please contact us for the exact immunogen sequence. The peptide is available as orb393957.

Target

Adrenomedullin

Form/Appearance

10 mM PBS, 0.02% sodium azide

Concentration

- 100 µg (in 200 µl): 0.5 mg/ml- 200 µg (in 400 µl): 0.5 mg/ml

Storage

Store at 4°C for up to two weeks. For long term storage, aliquot and store at -20°C, avoid freeze/thaw cycles.

Note

For research use only

Isotype

IgG

Clonality

Polyclonal

Purity

Polyclonal antibodies are purified by peptide affinity chromatography

MW

20 kDa

Uniprot ID

[P43145](#), [P97297](#)

NCBI

[001115](#), [001124](#)

Entrez

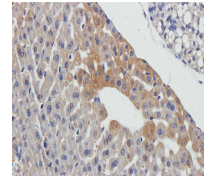
[133](#)

Dilution Range

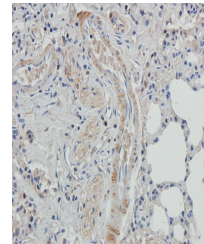
IF/ICC: 1:100-500, IHC-P: 1:100-500

Expiration Date

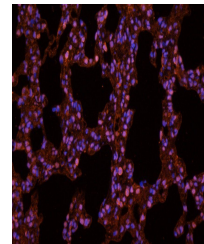
12 months from date of receipt.



Immunohistochemical staining of paraffin...



Immunohistochemical staining of rat lung...



IF analysis of rat lung tissue using ant...