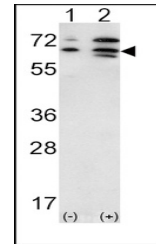


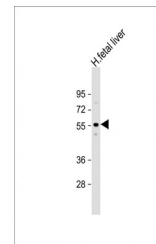
Product Datasheet

ACVR2A antibody (orb1429244)

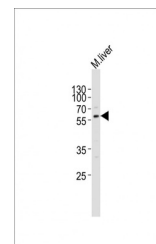
Description	Rabbit polyclonal antibody to ACVR2A.
Species/Host	Rabbit
Reactivity	Human, Mouse
Conjugation	Unconjugated
Tested Applications	WB
Immunogen	Synthetic Peptide
Target	ACVR2A
Form/Appearance	Purified polyclonal antibody supplied in PBS with 0.09% (W/V) sodium azide. This antibody is prepared by Saturated Ammonium Sulfate (SAS) precipitation followed by dialysis against PBS.
Storage	Maintain refrigerated at 2-8°C for up to 2 weeks. For long term storage store at -20°C in small aliquots to prevent freeze-thaw cycles
Note	For research use only
Isotype	Rabbit IgG
Clonality	Polyclonal
MW	57848
Uniprot ID	P27037
NCBI	NP_001265509.1 , NP_001607.1 , NP_001265508.1
Dilution Range	WB: 1:1000, WB: 1:1000, WB: 1:2000
Expiration Date	12 months from date of receipt.



Western blot analysis of ACVR2A (arrow) ...



Western blot: Anti-ACVR2A Antibody (N-terminus) ...



Western blot: Anti-ACVR2A Antibody (N-terminus) ...