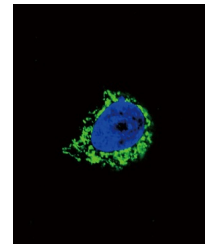


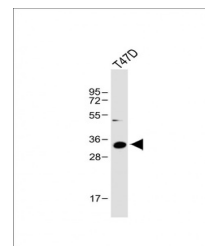
Product Datasheet

IGFBP2 antibody (orb1427905)

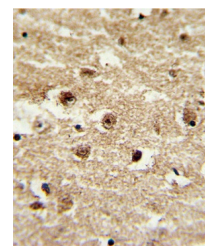
Description	Rabbit polyclonal antibody to IGFBP2.
Species/Host	Rabbit
Reactivity	Human
Conjugation	Unconjugated
Tested Applications	FC, IF, IHC-P, WB
Immunogen	Synthetic Peptide
Target	IGFBP2
Form/Appearance	Purified polyclonal antibody supplied in PBS with 0.09% (W/V) sodium azide. This antibody is purified through a protein A column, followed by peptide affinity purification.
Storage	Maintain refrigerated at 2-8°C for up to 2 weeks. For long term storage store at -20°C in small aliquots to prevent freeze-thaw cycles
Note	For research use only
Isotype	Rabbit IgG
Clonality	Polyclonal
MW	34814
Uniprot ID	P18065
NCBI	NP_000588.2
Dilution Range	IF: 1:10~50, WB: 1:1000, IHC-P: 1:10~50, FC: 1:10~50
Expiration Date	12 months from date of receipt.



Confocal immunofluorescent analysis of I...



Western blot: Anti-IGFBP2 Antibody (C-ter...



Immunohistochemical analysis of human br...