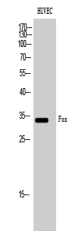


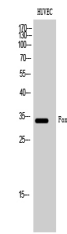
Product Datasheet

FoxE1 antibody (orb1413701)

Description	Rabbit polyclonal antibody to FoxE1.
Species/Host	Rabbit
Reactivity	Human, Mouse, Rat
Conjugation	Unconjugated
Tested Applications	IHC-P, WB
Form/Appearance	Liquid in PBS containing 50% glycerol, 0.5% rAlbumin and 0.09% (W/V) sodium azide.
Storage	-20°C
Note	For research use only
Clonality	Polyclonal
MW	38076 Da
Uniprot ID	000358
Dilution Range	WB: 1/500 - 1/2000. IHC-P: 1/100 - 1/300. ELISA: 1/10000
Expiration Date	12 months from date of receipt.



FoxE1 antibody



FoxE1 antibody