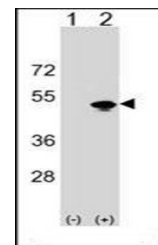
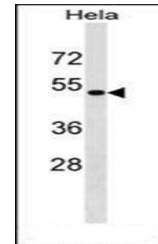


Product Datasheet

KRR1 antibody (orb140398)

Description	Rabbit Polyclonal to KRR1.
Species/Host	Rabbit
Reactivity	Human
Conjugation	Unconjugated
Tested Applications	WB
Immunogen	Synthetic Peptide
Target	KRR1
Form/Appearance	Purified polyclonal antibody supplied in PBS with 0.09% (W/V) sodium azide. This antibody is purified through a protein A column, followed by peptide affinity purification.
Storage	Maintain refrigerated at 2-8°C for up to 2 weeks. For long term storage store at -20°C in small aliquots to prevent freeze-thaw cycles
Note	For research use only
Application notes	Gene Symbol: KRR1. Gene-IDs: 11103. Accessions: NP_008974.5, Q13601.
Isotype	Rabbit IgG
Clonality	Polyclonal
MW	43665
Uniprot ID	Q13601
NCBI	NP_008974.5
Dilution Range	WB: 1:1000
Expiration Date	12 months from date of receipt.



Western blot analysis of 293 cell lysate...