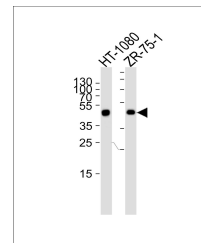
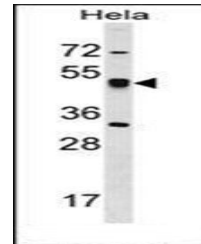


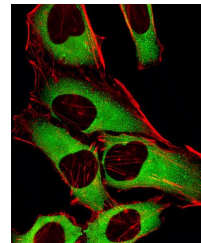
Product Datasheet

CRTAP antibody (orb140349)

| | |
|----------------------------|--|
| Description | Rabbit Polyclonal to CRTAP. |
| Species/Host | Rabbit |
| Reactivity | Human |
| Conjugation | Unconjugated |
| Tested Applications | WB |
| Immunogen | Synthetic Peptide |
| Target | CRTAP |
| Form/Appearance | Purified polyclonal antibody supplied in PBS with 0.09% (W/V) sodium azide. This antibody is purified through a protein A column, followed by peptide affinity purification. |
| Storage | Maintain refrigerated at 2-8°C for up to 2 weeks. For long term storage store at -20°C in small aliquots to prevent freeze-thaw cycles |
| Note | For research use only |
| Application notes | Gene Symbol: CRTAP. Gene-IDs: 10491. Accessions: NP_006362.1, O75718. |
| Isotype | Rabbit IgG |
| Clonality | Polyclonal |
| MW | 46562 |
| Uniprot ID | O75718 |
| NCBI | NP_006362.1 |
| Dilution Range | WB: 1:1000 |
| Expiration Date | 12 months from date of receipt. |



WB analysis of HT-1080 ZR-75-1 cell line...



Immunofluorescence analysis of HeLa cell...