

---

## Product Datasheet

### RAB28 antibody (orb140276)

**Description**

Rabbit Polyclonal to RAB28.

**Species/Host**

Rabbit

**Reactivity**

Human

**Conjugation**

Unconjugated

**Tested Applications**

FC, IHC-P, WB

**Immunogen**

Synthetic Peptide

**Target**

This RAB28 antibody is generated from rabbits immunized with a KLH conjugated synthetic peptide between 119-147 amino acids from the Central region of human RAB28.

**Form/Appearance**

Supplied in PBS with 0.09% (W/V) sodium azide

**Storage**

Maintain refrigerated at 2-8°C for up to 2 weeks. For long term storage store at -20°C in small aliquots to prevent freeze-thaw cycles.

**Note**

For research use only

**Application notes**

Gene Symbol: RAB28. Gene-IDs: 9364. Accessions: NP\_004240.2, NP\_001017979.1, P51157.

**Isotype**

Rabbit IgG

**Clonality**

Polyclonal

**Purity**

This antibody is purified through a protein A column, followed by peptide affinity purification.

**MW**

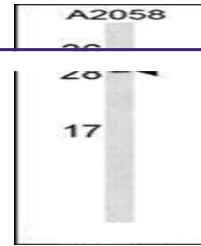
24841 Da

**Uniprot ID**
[P51157](#)
**NCBI**
[NP\\_001153073.1](#), [NP\\_004240.2](#), [NP\\_001017979.1](#)
**Dilution Range**

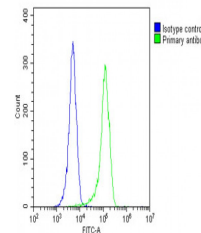
WB~~1:1000, IHC-P-Leica~~1:500, FC~~1:25

**Expiration Date**

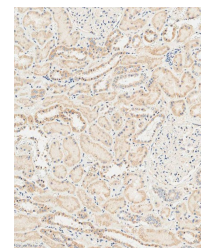
12 months from date of receipt.



Western blot analysis in A2058 cell line...



Flow cytometric analysis of A2058 cells ...



Immunohistochemical analysis of paraffin...