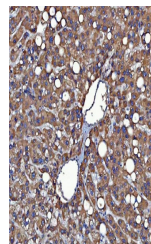


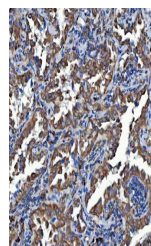
Product Datasheet

SDF2L1 Antibody (orb1402166)

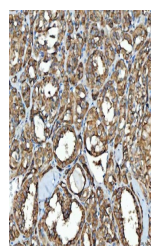
Description	SDF2L1 Antibody
Species/Host	Rabbit
Reactivity	Human, Mouse, Rat
Conjugation	Unconjugated
Tested Applications	ELISA, IF, IHC, WB
Immunogen	E.coli-derived human SDF2L1 recombinant protein (Position: A29-L221).
Form/Appearance	Lyophilized
Concentration	Adding 0.2 ml of distilled water will yield a concentration of 500 µg/ml.
Storage	At -20°C for one year from date of receipt. After reconstitution, at 4°C for one month. It can also be aliquotted and stored frozen at -20°C for six months. Avoid repeated freezing and thawing.
Note	For research use only
Application notes	Tested Species: In-house tested species with positive results. Other applications have not been tested. Optimal dilutions should be determined by end users. Adding 0.2 ml of distilled water will yield a concentration of 500 µg/ml.
Isotype	Rabbit IgG
Clonality	Polyclonal
MW	24 kDa
Uniprot ID	Q9HCN8
Expiration Date	12 months from date of receipt.



IHC analysis of SDF2L1 using anti-SDF2L1...



IHC analysis of SDF2L1 using anti-SDF2L1...



IHC analysis of SDF2L1 using anti-SDF2L1...