
Product Datasheet

SBP/SELENBP1 Antibody (orb1402103)

Description

SBP/SELENBP1 Antibody

Species/Host

Rabbit

Reactivity

Human, Mouse, Rat

Conjugation

Unconjugated

Tested Applications

ELISA, FC, IF, IHC, WB

Immunogen

E.coli-derived human SBP/SELENBP1 recombinant protein (Position: R23-P462).

Form/Appearance

Lyophilized

Concentration

Adding 0.2 ml of distilled water will yield a concentration of 500 µg/ml.

Storage

At -20°C for one year from date of receipt. After reconstitution, at 4°C for one month. It can also be aliquotted and stored frozen at -20°C for six months. Avoid repeated freezing and thawing.

Note

For research use only

Application notes

Tested Species: In-house tested species with positive results. Other applications have not been tested. Optimal dilutions should be determined by end users. Adding 0.2 ml of distilled water will yield a concentration of 500 µg/ml.

Isotype

Rabbit IgG

Clonality

Polyclonal

MW

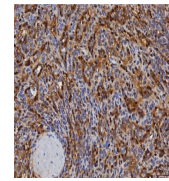
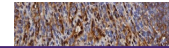
52-56 kDa

Uniprot ID
[Q13228](#)
Dilution Range

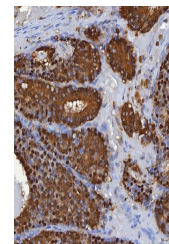
 Western blot, 0.1-0.25 µg/ml, Human, Mouse, Rat Immunohistochemistry(Paraffin-embedded Section), 2-5 µg/ml, Human, Rat Flow Cytometry, 1-3 µg/1x10⁶ cells, Human Direct ELISA, 0.1-0.5 µg/ml, Human

Expiration Date

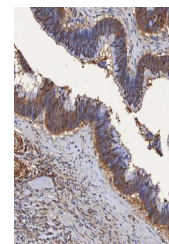
12 months from date of receipt.



IHC analysis of SBP/SELENBP1 using anti-...



IHC analysis of SBP/SELENBP1 using anti-...



IHC analysis of SBP/SELENBP1 using anti-...