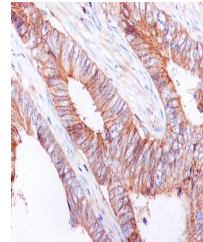


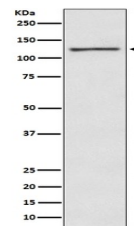
Product Datasheet

E Cadherin Rabbit Monoclonal Antibody (orb1402048)

Description	E Cadherin Rabbit Monoclonal Antibody
Species/Host	Rabbit
Reactivity	Human
Conjugation	Unconjugated
Tested Applications	FC, ICC, IF, IHC, WB
Immunogen	A synthesized peptide derived from human E Cadherin
Form/Appearance	Liquid
Concentration	Actual concentration vary by lot. Use suggested dilution ratio to decide dilution procedure.
Storage	Maintain refrigerated at 2-8°C for up to 2 weeks. For long term storage store at -20°C in small aliquots to prevent freeze-thaw cycles.
Note	For research use only
Application notes	WB 1:5000-1:10000IHC 1:100-1:500ICC/IF 1:100-1:500FC 1:500
Isotype	Rabbit IgG
Clonality	Monoclonal
MW	97456 MW
Uniprot ID	P12830
Expiration Date	12 months from date of receipt.



Immunohistochemical analysis of paraffin...



Western blot analysis of E-cadherin expr...