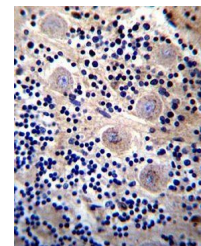
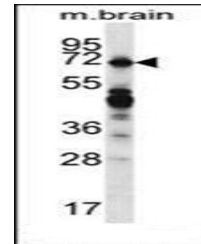


Product Datasheet

REPS2 antibody (orb140054)

Description	Rabbit Polyclonal to REPS2.
Species/Host	Rabbit
Reactivity	Human, Mouse
Conjugation	Unconjugated
Tested Applications	IHC-P, WB
Immunogen	Synthetic Peptide
Target	REPS2
Form/Appearance	Purified polyclonal antibody supplied in PBS with 0.09% (W/V) sodium azide. This antibody is purified through a protein A column, followed by peptide affinity purification.
Storage	Maintain refrigerated at 2-8°C for up to 2 weeks. For long term storage store at -20°C in small aliquots to prevent freeze-thaw cycles
Note	For research use only
Application notes	Gene Symbol: REPS2. Gene-IDs: 9185. Accessions: Q8NFH8, NP_004717.2, NP_001074444.1.
Isotype	Rabbit IgG
Clonality	Polyclonal
MW	71534
Uniprot ID	Q8NFH8
NCBI	NP_004717.2 , NP_001074444.1
Dilution Range	WB: 1:1000, IHC-P: 1:10-50
Expiration Date	12 months from date of receipt.



Immunohistochemical analysis of formalin...