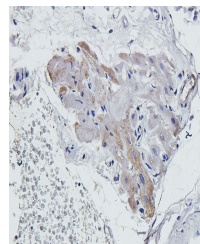


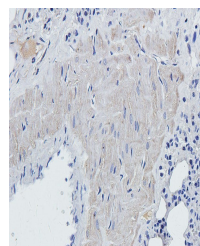
Product Datasheet

MKLP1 antibody (orb1400)

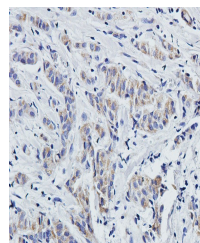
Description	MKLP1 antibody
Species/Host	Rabbit
Reactivity	Human, Mouse, Rat
Conjugation	Unconjugated
Tested Applications	IHC-P, WB
Immunogen	KLH conjugated synthetic peptide derived from human MKLP1. Please contact us for the exact immunogen sequence.
Target	MKLP1
Form/Appearance	10 mM PBS, 0.02% sodium azide
Concentration	- 100 µg (in 200 µl): 0.5 mg/ml. - 200 µg (in 400 µl): 0.5 mg/ml
Storage	Store at 4°C for up to two weeks. For long term storage, aliquot and store at -20°C, avoid freeze/thaw cycles.
Note	For research use only
Isotype	IgG
Clonality	Polyclonal
Purity	Polyclonal antibodies are purified by peptide affinity chromatography
MW	110 kDa
Uniprot ID	Q02241
Entrez	9493
Dilution Range	IHC-P: 1: 100-600
Expiration Date	12 months from date of receipt.



IHC-P staining of rat lung tissue using ...



Immunohistochemical staining of paraffin...



Immunohistochemical staining of human br...