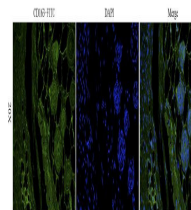


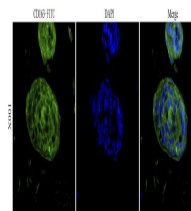
## Product Datasheet

### CD163 antibody (FITC) (orb13881)

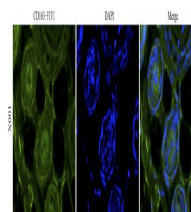
<b>Description</b>	CD163 antibody (FITC)
<b>Species/Host</b>	Rabbit
<b>Conjugation</b>	FITC
<b>Tested Applications</b>	ICC, IF
<b>Immunogen</b>	Synthetic peptide (please contact us for details)
<b>Target</b>	CD163 (FITC)
<b>Form/Appearance</b>	Liquid: PBS, 2 mM Sodium Azide, 30% glycerol
<b>Concentration</b>	- 100 µg (in 200 µl): 0.5 mg/ml
<b>Storage</b>	Store at 4°C for up to two weeks. For long term storage, aliquot and store at -20°C, avoid freeze/thaw cycles.
<b>Note</b>	For research use only
<b>Isotype</b>	IgG
<b>Clonality</b>	Polyclonal
<b>Purity</b>	Polyclonal antibodies are purified by peptide affinity chromatography
<b>Uniprot ID</b>	<a href="#">Q2VLH6</a> , <a href="#">Q86VB7</a> , <a href="#">D3Z9U2</a>
<b>NCBI</b>	<a href="#">NM_004244.51</a> , <a href="#">NM_004244.5</a> , <a href="#">NP_004235.4</a> , <a href="#">NP_004235.41</a>
<b>Entrez</b>	<a href="#">9332</a>
<b>Dilution Range</b>	IF/ICC: 1:50-100
<b>Expiration Date</b>	12 months from date of receipt.



IF analysis of mouse skin tissue using C...



Immunofluorescence analysis of mouse ski...



Immunofluorescence image of mouse skin t...