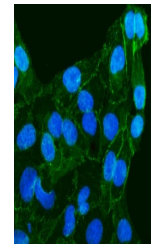


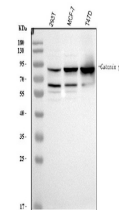
Product Datasheet

gamma Catenin/JUP Antibody (orb137971)

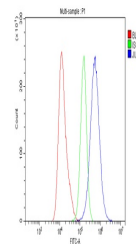
Description	gamma Catenin/JUP Antibody
Species/Host	Rabbit
Reactivity	Human
Conjugation	Unconjugated
Tested Applications	FC, ICC, IF, WB
Immunogen	A synthetic peptide corresponding to a sequence at the N-terminus of human gamma Catenin (101-118aa LLATQVEGQATNLQRLAE), different from the related mouse and rat sequences by one amino acid.
Form/Appearance	Lyophilized
Concentration	Adding 0.2 ml of distilled water will yield a concentration of 500 µg/ml.
Storage	Store at -20°C for one year from date of receipt. After reconstitution, at 4°C for one month. It can also be aliquotted and stored frozen at -20°C for six months. Avoid repeated freeze-thaw cycles.
Note	For research use only
Application notes	Tested Species: In-house tested species with positive results. Predicted Species: Species predicted to be fit for the product based on sequence similarities. Other applications have not been tested. Optimal dilutions should be determined by end users. . Add 0.2ml of distilled water will yield a concentration of 500ug/ml.
Isotype	Rabbit IgG
Clonality	Polyclonal
MW	81745 MW
Uniprot ID	P14923
Expiration Date	12 months from date of receipt.



IF analysis of JUP using anti-JUP antibody



Western blot analysis of JUP using anti-JUP antibody



Flow Cytometry analysis of A431 cells