

---

## Product Datasheet

### Integrin alpha 1/ITGA1 Antibody (orb137967)

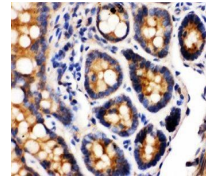
**Description**

Integrin alpha 1/ITGA1 Antibody



**Species/Host**

Rabbit



**Reactivity**

Human, Mouse, Rat

**Conjugation**

Unconjugated

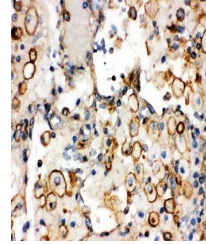
**Tested Applications**

IHC, WB

Immunohistochemical analysis of formalin...

**Immunogen**

A synthetic peptide corresponding to a sequence at the C-terminus of human Integrin alpha 1 (1121-1134aa SNQKRELAIQISKD), different from the related mouse and rat sequences by one amino acid.



Immunohistochemical analysis of formalin...

**Form/Appearance**

Lyophilized

**Concentration**

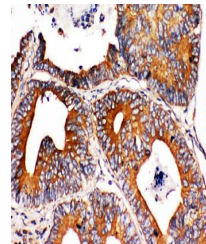
Adding 0.2 ml of distilled water will yield a concentration of 500 µg/ml.

**Storage**

Store at -20°C for one year from date of receipt. After reconstitution, at 4°C for one month. It can also be aliquotted and stored frozen at -20°C for six months. Avoid repeated freeze-thaw cycles.

**Note**

For research use only



Immunohistochemical analysis of formalin...

**Application notes**

Tested Species: In-house tested species with positive results. Predicted Species: Species predicted to be fit for the product based on sequence similarities. By Heat: Boiling the paraffin sections in 10mM citrate buffer, pH6.0, for 20mins is required for the staining of formalin/paraffin sections. Other applications have not been tested. Optimal dilutions should be determined by end users. . Add 0.2ml of distilled water will yield a concentration of 500ug/ml.

**Isotype**

Rabbit IgG

**Clonality**

Polyclonal

**MW**

130848 MW

**Uniprot ID**

**P56199**

**Expiration Date**

12 months from date of receipt.