
Product Datasheet

Mannose 6 Phosphate Receptor (Cation independent)/IGF2R Antibody (orb137954)

Description

Mannose 6 Phosphate Receptor (Cation


Species/Host

Rabbit

Reactivity

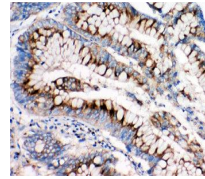
Human, Mouse, Rat

Conjugation

Unconjugated

Tested Applications

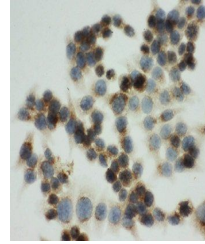
FC, WB



Immunohistochemical analysis of formalin...

Immunogen

A synthetic peptide corresponding to a sequence at the C-terminus of human Mannose 6 Phosphate Receptor (Cation independent) (2475-2491aa TKLVSFHDDSDDLLHI), different from the related rat and mouse sequences by one amino acid.



Confocal immunofluorescence analysis of ...

Form/Appearance

Lyophilized

Concentration

Adding 0.2 ml of distilled water will yield a concentration of 500 µg/ml.

Storage

Store at -20°C for one year from date of receipt. After reconstitution, at 4°C for one month. It can also be aliquotted and stored frozen at -20°C for six months. Avoid repeated freeze-thaw cycles.

Note

For research use only

Application notes

Tested Species: In-house tested species with positive results. Predicted Species: Species predicted to be fit for the product based on sequence similarities. By Heat: Boiling the paraffin sections in 10mM citrate buffer, pH6.0, for 20mins is required for the staining of formalin/paraffin sections. Other applications have not been tested. Optimal dilutions should be determined by end users. . Add 0.2ml of distilled water will yield a concentration of 500ug/ml.

Isotype

Rabbit IgG

Clonality

Polyclonal

MW

274375 MW

Uniprot ID
P11717
Dilution Range

Immunocytochemistry , 0.5-1µg/ml, Human, Mouse, Rat
Immunohistochemistry (Paraffin-embedded Section), 0.5-1µg/ml, Human,