
Product Datasheet

Laminin 2 alpha/LAMA2 Antibody (orb137930)

Description

Laminin 2 alpha/LAMA2 Antibody

Species/Host

Rabbit

Reactivity

Human, Mouse, Rat

Conjugation

Unconjugated

Tested Applications

WB

Immunogen

A synthetic peptide corresponding to a sequence at the N-terminus of human Laminin 2 alpha (152-170aa WILERSLDDVEYKPWQYHA), identical to the related mouse sequence, and different from the related rat sequence by one amino acid.

Form/Appearance

Lyophilized

Concentration

Adding 0.2 ml of distilled water will yield a concentration of 500 µg/ml.

Storage

Store at -20°C for one year from date of receipt. After reconstitution, at 4°C for one month. It can also be aliquotted and stored frozen at -20°C for six months. Avoid repeated freeze-thaw cycles.

Note

For research use only

Application notes

Tested Species: In-house tested species with positive results. Predicted Species: Species predicted to be fit for the product based on sequence similarities. Other applications have not been tested. Optimal dilutions should be determined by end users. . Add 0.2ml of distilled water will yield a concentration of 500ug/ml.

Isotype

Rabbit IgG

Clonality

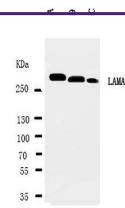
Polyclonal

MW

343905 MW

Uniprot ID
P24043
Expiration Date

12 months from date of receipt.



Western blot analysis of
Lane 1:
HELA Ce...