
Product Datasheet

T-bet/Tbx21 Antibody (orb137878)

Description

T-bet/Tbx21 Antibody

Species/Host

Rabbit

Reactivity

Human, Mouse, Rat

Conjugation

Unconjugated

Tested

WB

Applications
Immunogen

A synthetic peptide corresponding to a sequence at the C-terminus of human T-bet (522-535aa DKEAEGQFYNYFPN), different from the related rat and mouse sequences by one amino acid.

Form/Appearance

Lyophilized

Concentration

Adding 0.2 ml of distilled water will yield a concentration of 500 µg/ml.

Storage

Store at -20°C for one year from date of receipt. After reconstitution, at 4°C for one month. It can also be aliquotted and stored frozen at -20°C for six months. Avoid repeated freeze-thaw cycles.

Note

For research use only

Application notes

WB: The detection limit for TBX21 is approximately 0.5ng/lane under reducing conditions. Tested Species: In-house tested species with positive results. Predicted Species: Species predicted to be fit for the product based on sequence similarities. Other applications have not been tested. Optimal dilutions should be determined by end users. . Add 0.2ml of distilled water will yield a concentration of 500ug/ml.

Isotype

Rabbit IgG

Clonality

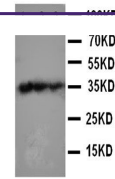
Polyclonal

MW

58328 MW

Uniprot ID
[Q9UL17](https://www.uniprot.org/uniprot/Q9UL17)
Expiration Date

12 months from date of receipt.



Western blot analysis of
Lane 1:
Recombi...